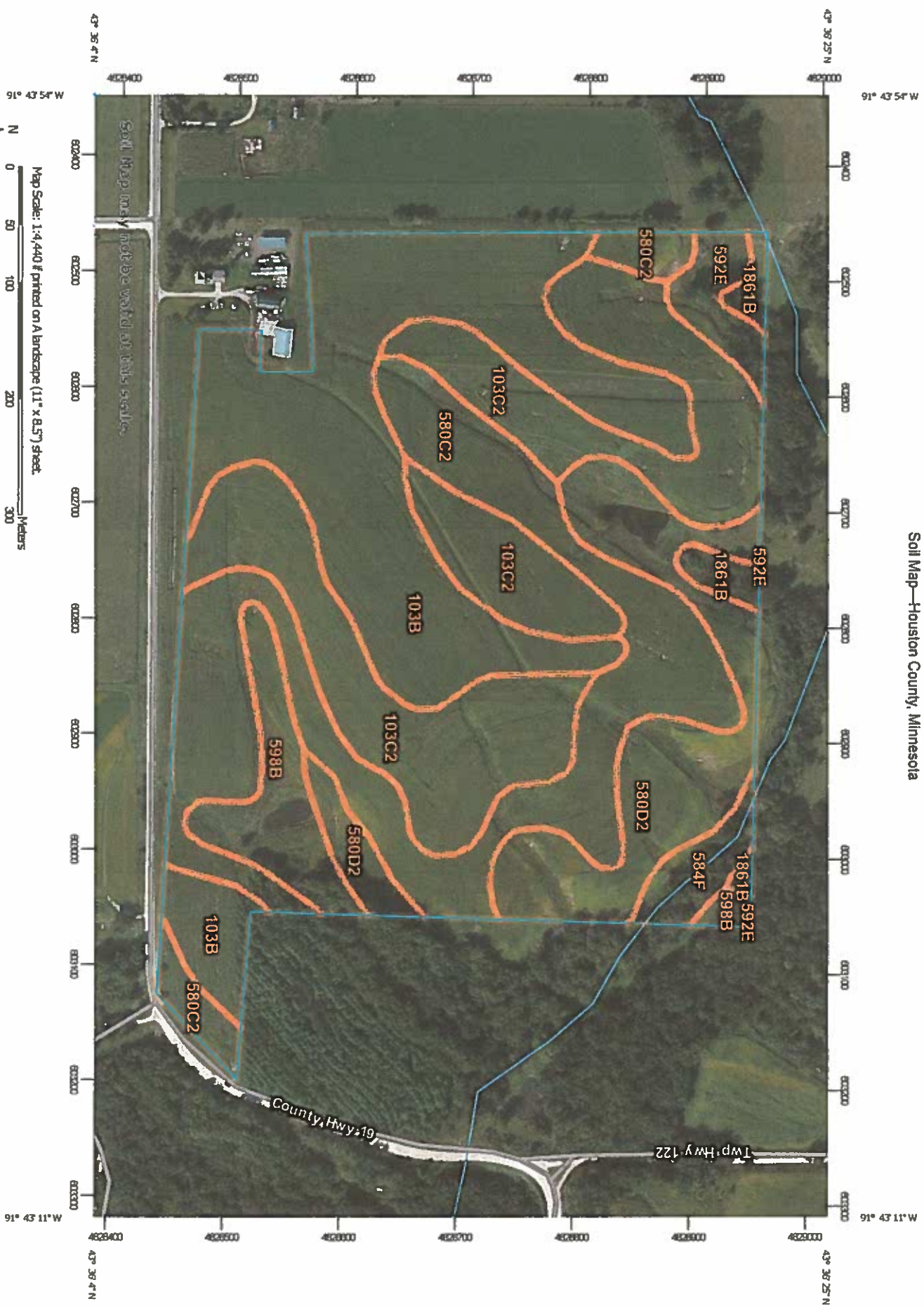


Page 107

Soil Map—Houston County, Minnesota



USDA  
 Natural Resources  
 Conservation Service

Map Scale: 1:4,440 if printed on A landscape (11" x 8.5") sheet.  
 Map projection: Web Mercator Corner coordinates: WGS84 Edge tics: UTM Zone 15N WGS84

Web Soil Survey  
 National Cooperative Soil Survey

## Map Unit Legend

Houston County, Minnesota (MN055)			
Map Unit Symbol	Map Unit Name	Acres in AOI	Percent of AOI
103B	Seaton silt loam, ridge phase, 2 to 6 percent slopes	19.2	26.5%
103C2	Seaton silt loam, driftless ridge, 6 to 12 percent slopes, moderately eroded	19.0	26.2%
580C2	Blackhammer-Southridge silt loams, 6 to 12 percent slopes, eroded	17.2	23.7%
580D2	Blackhammer-Southridge silt loams, 12 to 20 percent slopes, eroded	9.3	12.9%
584F	Lamoille-Dorerton silt loams, 30 to 45 percent slopes	1.4	2.0%
592E	Lamoille-Elbaville silt loams, 20 to 30 percent slopes	1.5	2.1%
598B	Beavercreek-Arenzville complex, 1 to 12 percent slopes	3.6	5.0%
1861B	Chaseburg silt loam, channeled, 2 to 6 percent slopes	1.2	1.6%
<b>Totals for Area of Interest</b>		<b>72.5</b>	<b>100.0%</b>

## MAP LEGEND

	Area of Interest (AOI)		Spoil Area
	Area of Interest (AOI)		Stony Spot
<b>Soils</b>			
	Soil Map Unit Polygons		Very Stony Spot
	Soil Map Unit Lines		Wet Spot
	Soil Map Unit Points		Other
<b>Special Point Features</b>			
	Blowout		Special Line Features
	Borrow Pit	<b>Water Features</b>	
	Clay Spot		Streams and Canals
	Closed Depression	<b>Transportation</b>	
	Gravel Pit		Rails
	Gravelly Spot		Interstate Highways
	Landfill		US Routes
	Lava Flow		Major Roads
	Marsh or swamp		Local Roads
	Mines or Quarry		Background
	Miscellaneous Water		Aerial Photography
	Perennial Water		
	Rock Outcrop		
	Saline Spot		
	Sandy Spot		
	Severely Eroded Spot		
	Sinkhole		
	Slide or Slip		
	Sodic Spot		

## MAP INFORMATION

The soil surveys that comprise your AOI were mapped at 1:15,800.

Warning: Soil Map may not be valid at this scale.

Enlargement of maps beyond the scale of mapping can cause misunderstanding of the detail of mapping and accuracy of soil line placement. The maps do not show the small areas of contrasting soils that could have been shown at a more detailed scale.

Please rely on the bar scale on each map sheet for map measurements.

Source of Map: Natural Resources Conservation Service  
 Web Soil Survey URL:  
 Coordinate System: Web Mercator (EPSG:3857)

Maps from the Web Soil Survey are based on the Web Mercator projection, which preserves direction and shape but distorts distance and area. A projection that preserves area, such as the Albers equal-area conic projection, should be used if more accurate calculations of distance or area are required.

This product is generated from the USDA-NRCS certified data as of the version date(s) listed below.

Soil Survey Area: Houston County, Minnesota  
 Survey Area Data: Version 11, Sep 19, 2016

Soil map units are labeled (as space allows) for map scales 1:50,000 or larger.

Date(s) aerial images were photographed: Nov 1, 2010—Sep 11, 2011

The orthophoto or other base map on which the soil lines were compiled and digitized probably differs from the background imagery displayed on these maps. As a result, some minor shifting of map unit boundaries may be evident.